

Benefits

For the Fitter:

- easy to fit (bend the Collar by hand to fit)
- good access to tracheal tube, if needed
- accessories available to modify function (see back panel)
- all parts for the Collar are available as replacements (see price list)

For the Wearer and/or Caregiver:

- a cool, comfortable collar
- low heat retention
- easy to put on and remove
- low profile; unobtrusive appearance
- choice of colours
- easy to keep clean
- firm support for the head

Sizes and Colours



Large, Medium, Small, Junior & Child sizes available in Beige, Black, Grey & Blue. Infant size available in Grey only.

References:

For further reading and clinical examples:

“Managing Neck Weakness in Clients with Neuromuscular Disease” - Trail, M. *O.T. Practice, May, 1997, pp 53-56*

“Headmaster Collar Restricts Rheumatoid Atlantoaxial Subluxation” - Kauppi, M., Neva, H. & Kautiainen, H. *Spine - Vol. 24, No. 6, March 15, 1999, pp 526 - 528*

Accessories

Extension Pads

Model #	Size	Fits
HMCPL	Large	Large & Medium
HMCPS	Small	Small & Junior
HMCPC	Child	Child & Infant



Two pads that can be variably placed to give extension or lateral support.

Neck Pads

Model #	Size	Fits
HMNPL	Large	Large & Medium
HMNPS	Small	Small & Junior
HMNPC	Child	Child & Infant



One pad centrally placed for comfortable extension resistance.

Anterior Support

Model #	Size	Fits
AST 01	Large	Large & Medium
AST 02	Small	Small & Junior
AST 03	Child	Child & Infant



An add-on anterior tube (and chin pad) to give solid resistance against flexion.



The Headmaster Collar



Cool, low profile head support

The Headmaster Collar™ is the collar of choice for the best in head control.

This innovative Collar provides excellent all round support and keeps you looking great! Light and airy, the Collar is covered in a soft, washable fabric in a variety of colours. The Collar is easily formed by hand to fit snugly underneath the chin.

Choosing the Correct Size

- Dimension 'a' is the shortest distance under the jaw from the centre of the chin to the angle of the mandible.
- Select the closest size Collar from the table below (choose the smaller Collar if in doubt).



Collar Size	'a'		Size & Colours			
	in.	cm.	Grey	Black	Beige	Blue
Large	5	13	HMC01-G	HMC01-K	HMC01-B	HMC01-U
Med	4.5	11.5	HMC02-G	HMC02-K	HMC02-B	HMC02-U
Small	4	10	HMC03-G	HMC03-K	HMC03-B	HMC03-U
Junior	3.5	9	HMC04-G	HMC04-K	HMC04-B	HMC04-U
Child	3	7.5	HMC05-G	HMC05-K	HMC05-B	HMC05-U
Infant	2.5	6.5	HMC06-G	N/A	N/A	N/A



Pediatric Headmaster Collars are softer and may be fitted to children as young as 6 months.

Fitting Instructions

Shaping of the Collar

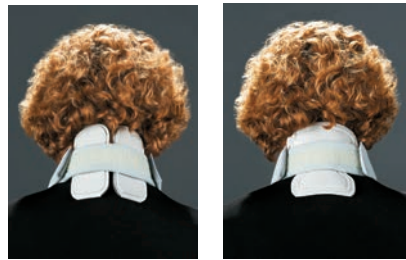
- Bend the Collar to the desired height & width by hand.
- It will stay in the shape you set it.



- Bend the Collar to clear the clavicles (collar bones) if necessary.
- A chin pad can be added to the chest portion of the Collar for extra padding if needed.



Use accessories for extra flexion and extension support (See overleaf).



Final Checks

- Check that the Collar fits snugly under the chin.
- The neckstrap should be around the back of the neck only.



For extra support use the Neck Pad or the Extension Pads to resist extension of the neck. Use the Anterior Support to rigidify the Collar, if needed (shown overleaf).

Using the Headmaster Collar™

- ✓ It is recommended that a Qualified Professional should fit this Collar!
- ✓ Ensure the correct size has been selected!
- ✗ Do not attach this Collar to any other equipment or support!
- ✓ Wash Collar with damp sponge and warm, soapy water. Rinse thoroughly with damp sponge. Air dry.

Symmetric Designs accepts no liability resulting from the misapplication of this product.